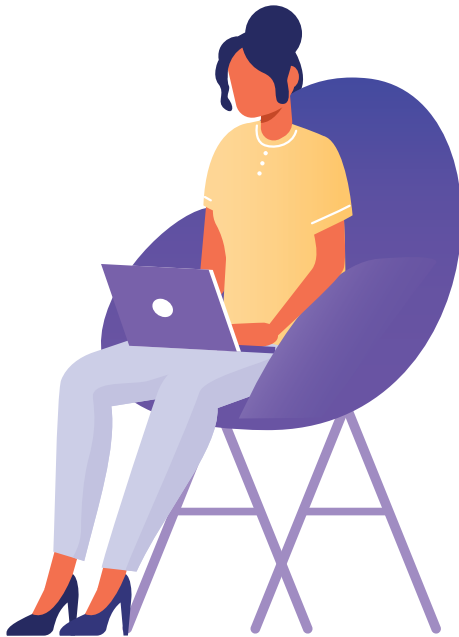




**The social learning community
for learning industry professionals.**



Membership questions?
Please contact us at
members@TrainingMagNetwork.com

*Membership **PLUS** is \$95/year for 365 Days of benefits,
at the end of which you'll have the option to renew.
Please see TrainingMagNetwork.com/Plus for full details.

Visit TrainingMagNetwork.com today
to join *Training* magazine's one-of-a-kind
social learning network.

- Gain access to the resources, tools, and support necessary to craft impactful learning experiences.
- Stay ahead in the dynamic training and learning landscape. Maximize results by effectively using generative AI and emerging technologies.

EXPLORE TRAINING MAGAZINE NETWORK'S GROWING MEMBERSHIP BENEFITS!

BASIC • FREE!

Over 2000 Recorded Webinars in our Archive

- ✓ Access to weekly multiple live webinars & their recordings
- ✓ White papers
- ✓ eBooks
- ✓ Surveys
- ✓ Resources
- ✓ Presentation templates, images & graphics
- ✓ Expert articles & more

Or upgrade to...

Membership **PLUS** • \$95/year*

Access to our Live & Recorded Masters Series Events

- ✓ All the benefits of the Basic level **PLUS...**
- ✓ 20+ exclusive additional benefits
- ✓ Custom presentation tools & resources
- ✓ Online workshops
- ✓ Discounts on *Training* magazine's Conferences
- ✓ Discounts on Training Live+Online certificate courses
- ✓ **PLUS** more

Additional Savings With Membership **PLUS**
\$150 off a Conference Registration
Details at TrainingMagNetwork.com/PLUS

training 2026 conference & expo

TRAINING MAGAZINE'S 49TH ANNUAL GATHERING

FEBRUARY 23 – 25 | ORLANDO